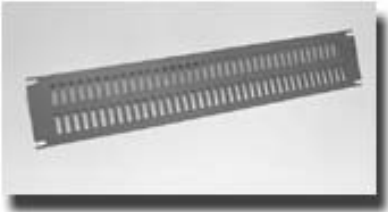


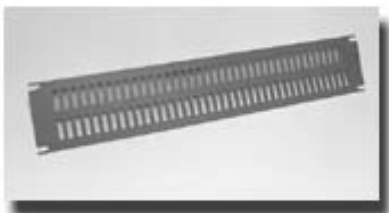
Path: [Home](#) > [Rack Index](#) > Cooling Accessories



Slotted Steel Panel

- Standard 19" rack mount
- 14 gauge steel construction
- Slots are 0.25" x 1.0"
- Powder paint finish - smooth finish to match our standard panels
- Requires mounting [hardware](#)

Part Number	Color	Drawing File Size	.zip file size	Rows of Slots	Panel Height		Open Space (Cubic In.)
					Inches	Units	
PVSS19001BK2 PVSS19001CG2	Black Gray/Beige	13K	12K	1	1.75	1	9.7
PVSS19003BK2 PVSS19003CG2	Black Gray/Beige	14K	13K	2	3.50	2	19.4



Slotted Aluminum Panel

- Standard 19" rack mount
- 0.13" thick aluminum construction
- Slots are 0.25" x 1.0"
- Powder paint finish - smooth finish to match our standard panels
- Requires mounting [hardware](#)

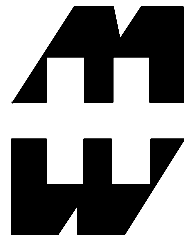
Part Number	Color	Drawing File Size	.zip file size	Rows of Slots	Panel Height		Open Space (Cubic In.)
					Inches	Units	
PVSA19001BK2 PVSA19001CG2	Black Gray/Beige	13K	11K	1	1.75	1	9.7
PVSA19003BK2 PVSA19003CG2	Black Gray/Beige	14K	13K	2	3.50	2	19.4



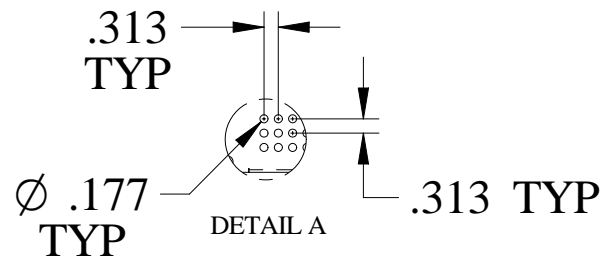
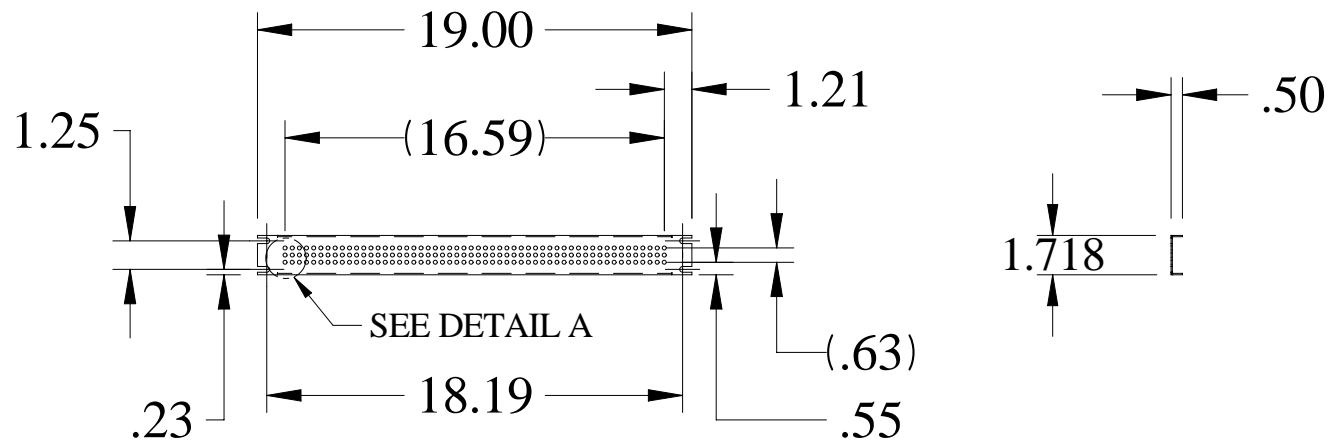
Perforated Panel

- Standard 19" rack mount
- Folded (for extra strength) - 16 ga. steel construction
- Powder paint finish - smooth finish to match our standard panels
- Requires mounting [hardware](#)

Part Number	Color	Drawing File Size	.zip file size	Panel Height	
				Inches	Units
PPFS19001BK2 PPFS19001CG2	Black Gray/Beige	26K	16K	1.75	1
PPFS19003BK2 PPFS19003CG2	Black Gray/Beige	46K	18K	3.50	2
PPFS19005BK2 PPFS19005CG2	Black Gray/Beige	41K	18K	5.25	3
PPFS19007BK2 PPFS19007CG2	Black Gray/Beige	54K	20K	7.00	4
PPFS19008BK2 PPFS19008CG2	Black Gray/Beige	61K	23K	8.75	5
PPFS19010BK2 PPFS19010CG2	Black Gray/Beige	72K	26K	10.50	6



PART No. PPFS19001BK2



Ventilated Panels

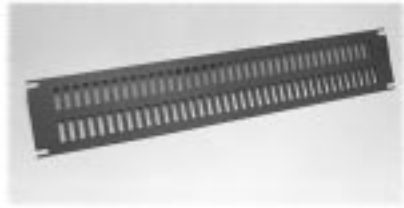


LOUVERED PANELS

- Standard, 19" rack mount
- Formed 16 gauge steel construction
- Includes a 0.50" fold, top and bottom for added strength
- Designed with 3 columns of 4" wide louvers
- Smooth powder paint finish to match our standard panels
- Louvers face out
- Requires mounting hardware

Part Number		Panel Height		Rows of Louvers
Black Smooth	Beige Smooth	Inches	Units	
PVLL19005BK2	PVLL19005CG2	5.25	3	3
PVLL19007BK2	PVLL19007CG2	7.00	4	4
PVLL19008BK2	PVLL19008CG2	8.75	5	6
PVLL19010BK2	PVLL19010CG2	10.50	6	8
PVLL19012BK2	PVLL19012CG2	12.25	7	10

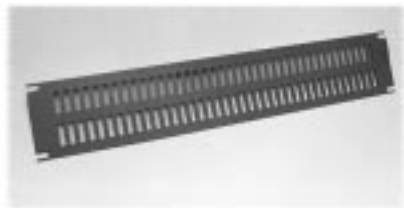
SLOTTED STEEL PANELS



- Standard, 19" rack mount
- 14 gauge steel construction
- Slots are 0.25" x 1.0"
- Smooth powder paint finish to match our standard panels
- Requires mounting hardware

Part Number		Panel Height		Rows of Slots	Open Space (Cubic In.)
Black Smooth	Beige Smooth	Inches	Units		
PVSS19001BK2	PVSS19001CG2	1.75	1	1	9.7
PVSS19003BK2	PVSS19003CG2	3.50	2	2	19.4

SLOTTED ALUMINUM PANELS



- Standard, 19" rack mount
- 0.13" thick aluminum construction
- Slots are 0.25" x 1.0"
- Smooth powder paint finish to match our standard panels
- Requires mounting hardware

Part Number		Panel Height		Rows of Slots	Open Space (Cubic In.)
Black Smooth	Beige Smooth	Inches	Units		
PVSA19001BK2	PVSA19001CG2	1.75	1	1	9.7
PVSA19003BK2	PVSA19003CG2	3.50	2	2	19.4

PERFORATED STEEL PANELS



- Standard, 19" rack mount
- Folded (for extra strength) - 16 gauge steel construction
- Smooth powder paint finish to match our standard panels
- Requires mounting hardware

Part Number		Panel Height	
Black Smooth	Beige Smooth	Inches	Units
PPFS19001BK2	PPFS19001CG2	1.75	1
PPFS19003BK2	PPFS19003CG2	3.50	2
PPFS19005BK2	PPFS19005CG2	5.25	3
PPFS19007BK2	PPFS19007CG2	7.00	4
PPFS19008BK2	PPFS19008CG2	8.75	5
PPFS19010BK2	PPFS19010CG2	10.50	6